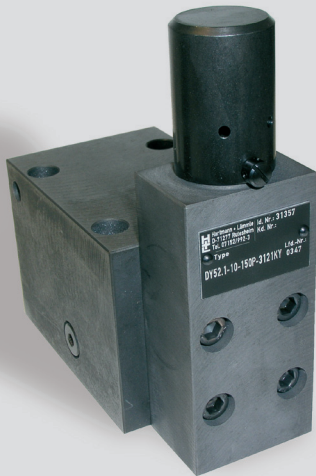


## Accumulator Charging Valve NG 10 ISO 4401



### Design and Function

Accumulator charging valves are piloted piston valves. The valve controls the hydraulic accumulator charging process, for systems with fixed displacement pumps.

After the accumulator has been charged and system pressure is reached, the valve then switches the pump flow into bypass mode (P to T). When the pressure falls because functions are demanding flow, the valve will sense the difference and will close the bypass to allow the accumulator to recharge. Pressure differences available include: 5%, 10%, 15% and 20%.

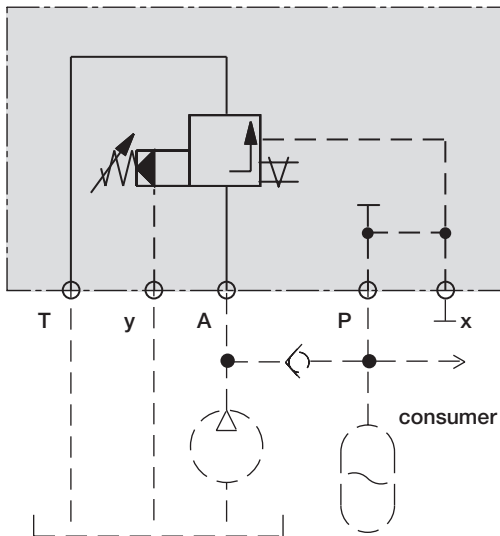
## Advantages

- optimised power economy and reduced heat emission from the hydraulic system
- energy saving due to low bypass pressure
- fixed switching hysteresis, simple start up procedure
- soft and exact switching over due to pressure pre-relieve
- robust und reliable through simple design

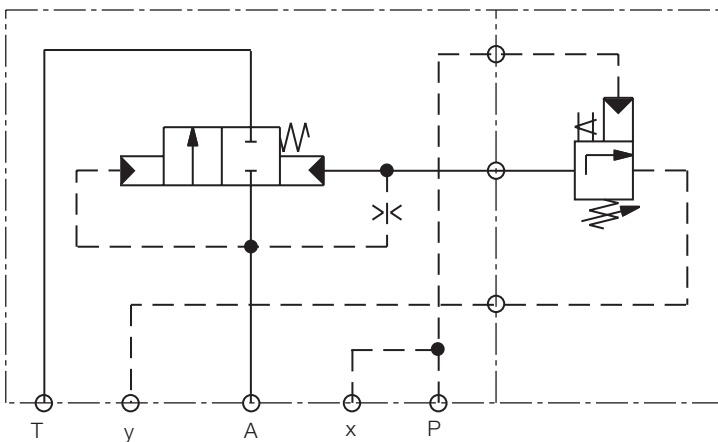
## Options

- electrical discharge (data sheet 344)
- complete accumulator charging units (data sheet 711)

## Symbol



## Symbol, detailed

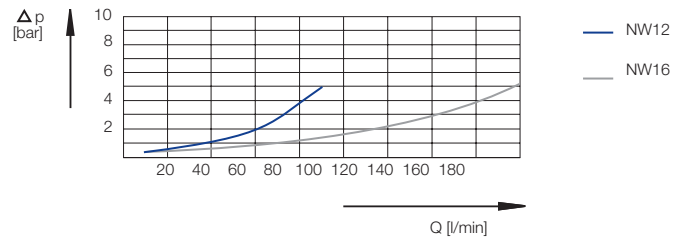


## Technical Data

### General

Symbol	please see symbol diagram
Type of valve	piloted piston valve
Operation	electric
Mounting	4 x M6 x 30 DIN912
Connection of ports	block mounting
Mounting positions	mountable in any positions
Ambient temperature	-5 to +50 °C
Mass valve	0.8kg

## Characterstic curve

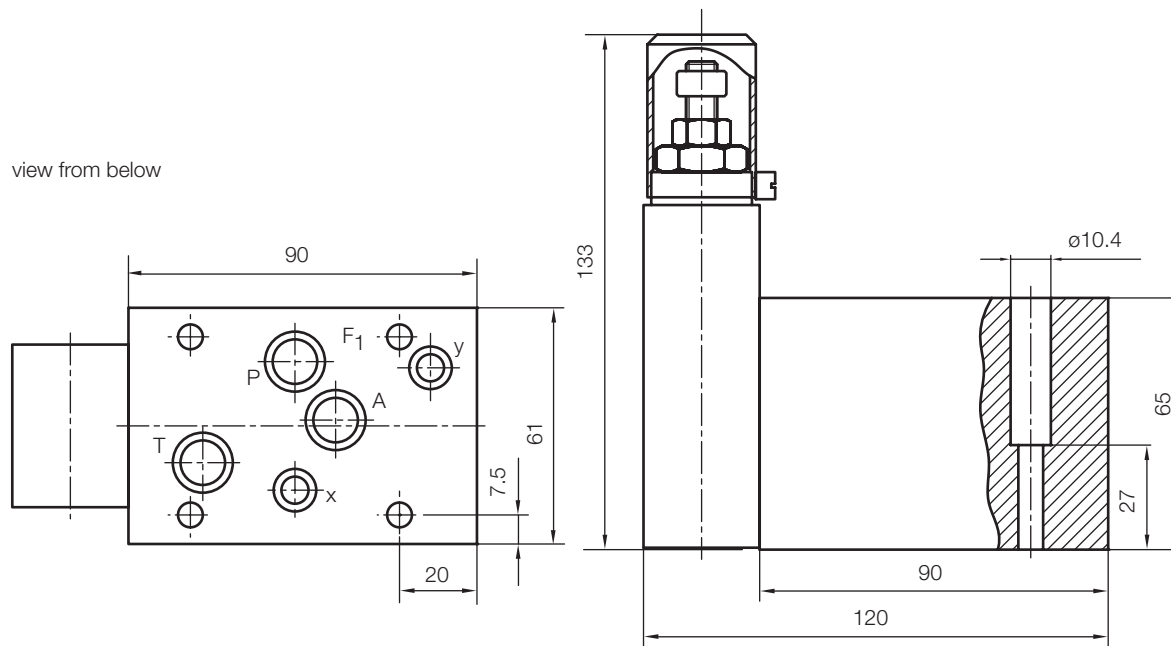


hydraulic oil 35 mm<sup>2</sup>/s, 50°C

### Hydraulic

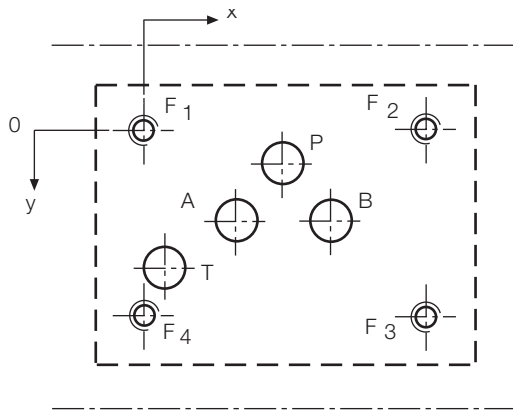
Operation pressure range	20-60; 45-80; 80-120; 120-175; 175-250; 250-315 bar
Switch hysteresis	5; 10; 15 or 20 %
Hydraulic oil temperature	-5 to +70 °C
Viscosity range	10 to 300 mm <sup>2</sup> /s
Max rate of flow	90 NW12; 180 NW16 l/min

## Dimensional Drawing



all dimensions in mm

## Port Connection Pattern

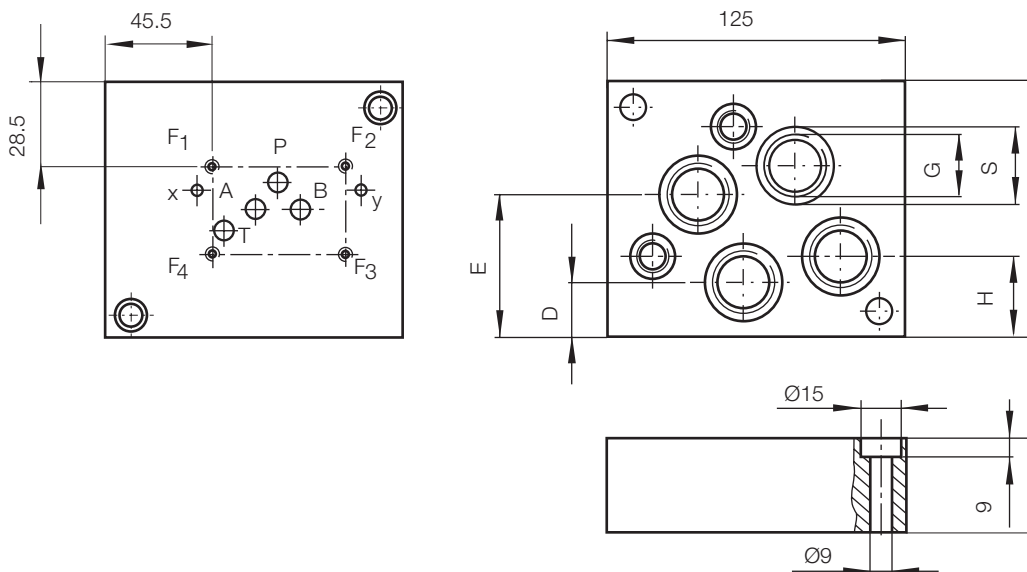


view: fastening side of mounting plate

	P	A	T	B	F1	F2	F3	F4
Ø max [mm]	11,2	11,2	11,2	11,2	M6	M6	M6	M6
x [mm]	27	16,7	3,2	37,3	0	54	54	0
y [mm]	6,3	21,4	32,5	21,4	0	0	46	46

F: M5, thread depth min. 1.5 x Ø

## Single-Unit Mounting Plate



G	S	D	E	H	M
R 3/8"		30	55	41,5	67
R 1/2"	Ø 27	26	59	37,5	71
R 3/4"	Ø 33	24	61	35,5	73

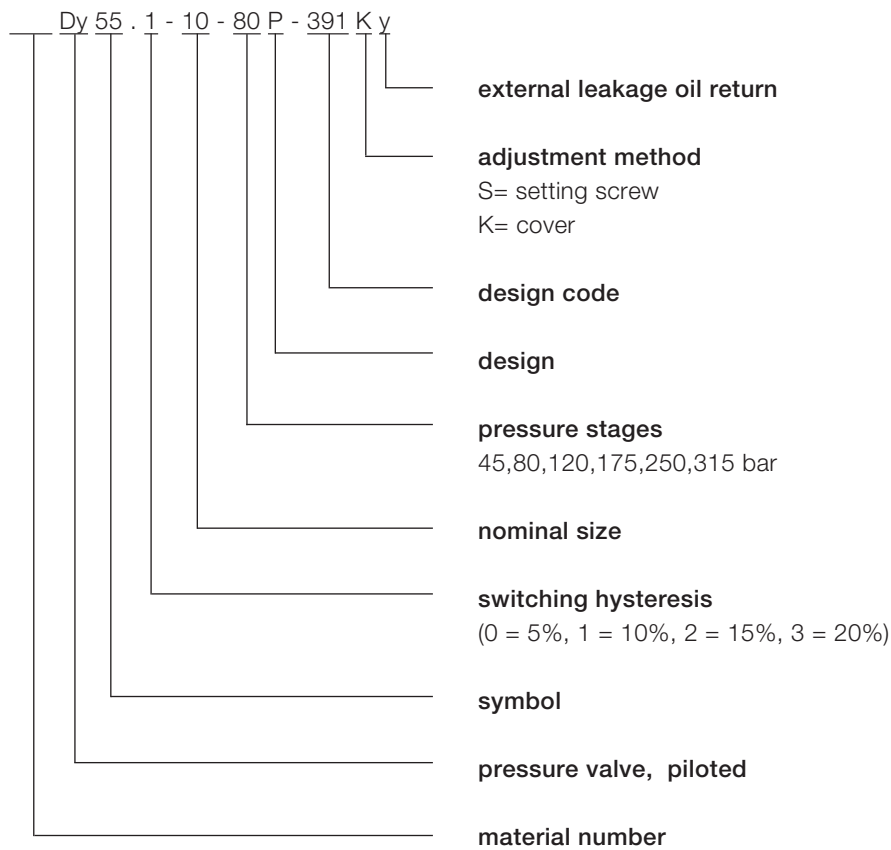
Order number single-unit mounting plate:

PW10-G3-400, pipe connections R3/8"  
 PW10-G4-400, pipe connections R1/2"  
 PW10-G5-400, pipe connection R3/4"

Multiple-unit mounting plate on request.

## Type Code

---



Voith Turbo H + L Hydraulic GmbH & Co. KG  
Schuckertstraße 15  
71277 Rutesheim, Germany  
Tel. +49 7152 992-3  
Fax +49 7152 992-400  
sales-rut@voith.com

voith.com



**VOITH**  
Engineered Reliability